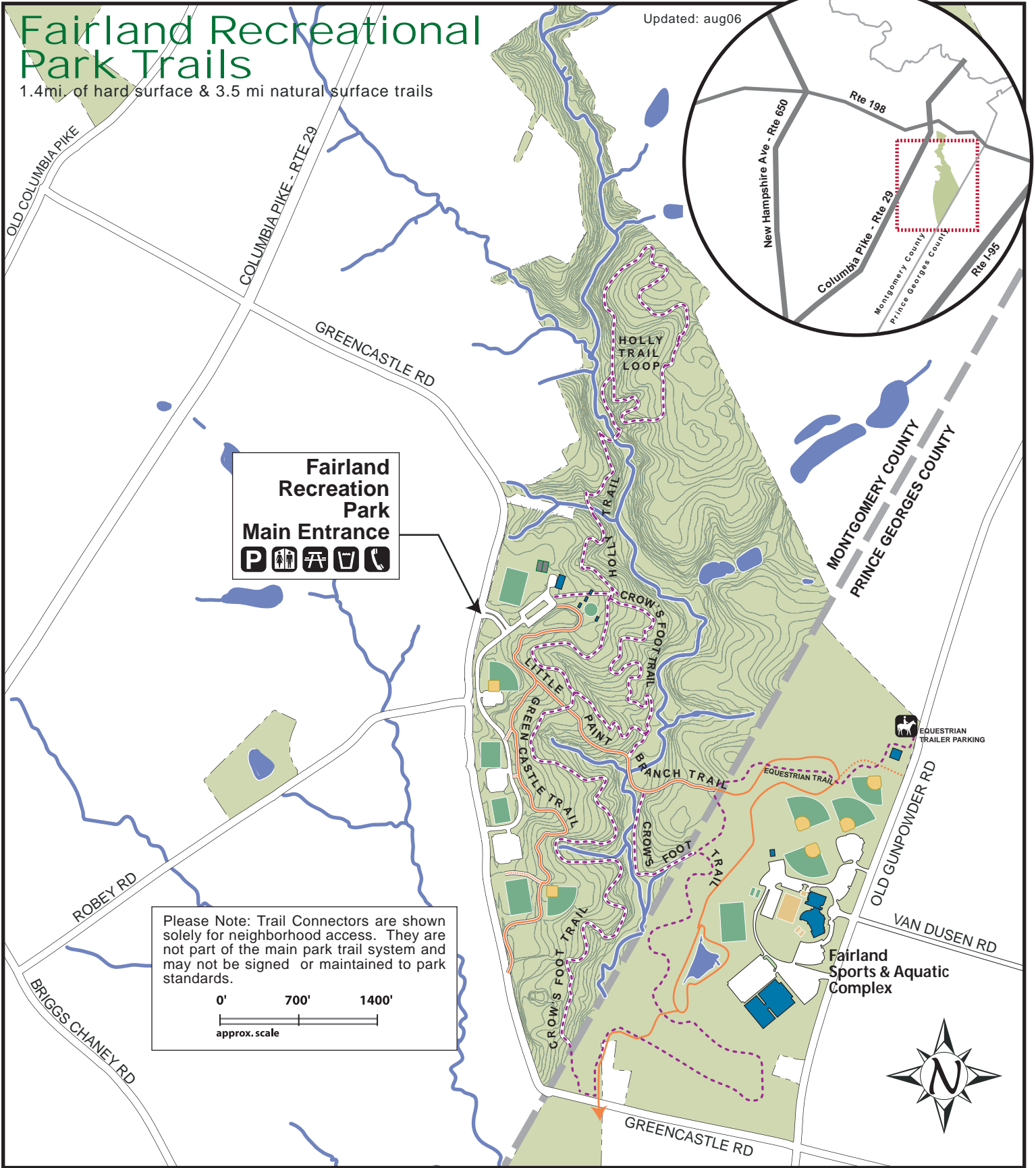


Fairland Recreational Park Trails

1.4mi. of hard surface & 3.5 mi natural surface trails

Updated: aug06



Fairland Recreation Park Main Entrance

Please Note: Trail Connectors are shown solely for neighborhood access. They are not part of the main park trail system and may not be signed or maintained to park standards.

0' 700' 1400'
 approx. scale

Trail Features

The vegetation and wildlife will vary from our other parks due to its unique location. Of the 322 acres on the Montgomery County side, only 39 acres are developed because the area is environmentally sensitive.

Montgomery County Trail Mileages

| | | | |
|---------------------------|-------|------------------|------|
| Little Paint Branch Trail | .7mi | Holly Trail | .6mi |
| Green Castle Trail | .7 mi | Holly Trail Loop | .95 |
| Crow's Foot Trail | 2.5mi | | |

| | | | |
|--|---------------------------------------|--|-----------------------------------|
| | Hard Surface Trail Trail Connector | | Use extreme caution crossing road |
| | Natural Surface Trail Trail Connector | | Steep Slope |
| | Hiker Only Trail Connector | | Drinking Water |
| | Parklands & Topography | | Parking |
| | Streams & Ponds | | Phone |
| | | | Bathrooms |
| | | | Picnic Area |

M-NCPPC

Park Police: 301.949.3010 (Emergency Only)
SmartParks: 301.670.8080